

# walls by patel

press-information

# content

<b>texts</b>	page 03
- press release long version	page 04
- press release short version	page 05
- brochure text	page 06
- theme texts	page 07

<b>images</b>	page 08
- portraits + logos	page 09
- playful futurism	page 10
- generative phantasies	page 12
- down to earth	page 14
- handcrafted charisma	page 17
- old world opulence	page 21

<b>print materias</b>	page 24
- collection book	page 25
- teaser brochure	page 26

<b>contact</b>	page 27
----------------	---------

—

# walls by patel texts

# press release long version

## dive into the fourth dimension

The fourth edition of **walls by patel** invites you to play creatively with the 4th dimension: the designer couple Kathrin and Mark Patel focus on time. The designs offer 124 possibilities to give rooms their very own rhythm. Five themed worlds provide inspiration; from exciting and fast for an ultra-modern interior or dreamlike calm and contemplative in decelerated areas. 'playful futurism', 'generative fantasies', 'down to earth', 'handcrafted charisma', 'old world opulence' - these **walls by patel** create temporal references that provide special focal points in private areas or in public spaces such as retail, hotels, restaurants or offices. They tell contemporary stories and are effective pacemakers for the tempo in the room.

---

# press release short version

## dive into the fourth dimension

The designs of the fourth edition of **walls by patel** dive into the 4th dimension: the five theme worlds 'playful futurism', 'generative fantasies', 'down to earth', 'handcrafted charisma' and 'old world opulence' provide multiple inspirations and time zones. From exciting and fast for an ultra-modern interior or dreamlike calm and contemplative in decelerated areas - creative, playful and truly contemporary in a special sense of the word.

—

# brochure text

## dive into the fourth dimension

The fourth edition of **walls by patel** brings the 4th dimension to your wall – time. Dive into the time flow and find your beat: every era has its own style, every time its own character. What captivates you? The fascination of the future or the opulence of days gone by? The earth-bound environment of nature or the handmade weave that stands the test of time?

**walls by patel** give your desires space – and time. The designs create temporal references by giving the ambiance a strong context that is always on the cutting edge. Not only in purely visual terms with an unmistakable stylistic statement that each mural carries. But also in terms of the dynamics that prevail in the rooms. Exciting and up-beat for an ultra-modern interior or calm and serene in decelerated areas. Or perhaps completely contemporary with all senses in the here and now ...

Depending on the purpose of the space, these designs influence the ambiance with their own time flow. Are you playing with the echoes of the past? Or the call for original purity? Maybe you envisage the future and the passage to new worlds? The diversity of these wall designs creates special focal points in private interiors and in public spaces such as retail, hotels, restaurants or office areas. They tell stories about time and are effective pacemakers for the beat within the ambiance.

—

# theme texts

**playful futurism** Playfully designing the world of tomorrow: These wall compositions reflect innovative thinking and forward-minded creativity. Artistic, experimental; radiating courage and optimism – they dynamically set the scene for the ambience and create an auspicious mood of endeavor.

**generative phantasies** Digitally generated artwork for walls: pixels, grids and vectors are the basis of these designs. Here, a wide variety of computer-generated streams are woven into an innovative overall image. Visionary, progressive and futuristic – some of these designs are bold, some are subdued, but all of them are unconventional and surprising.

**down to earth** These designs offer a special, sensual grounding that evokes associations with natural materials, simplicity and originality. Back to the roots, in touch with nature and in harmony with the environment, these walls by patel create a sustainable, gently paced harmony.

**handcrafted charisma** Highlighting artistry with a fascinating eye for detail, these murals rely on the association with traditional craftsmanship. Painting, pottery, woven materials or tile painting – here, arts and crafts are staged with great appreciation. They convey originality and liveliness, and, with their positive charisma, develop an alluring appeal in the here and now.

**old world opulence** These designs carry historical charm and the opulent elegance of bygone times into the presence: colorful, dazzling and with a certain grandeur, they bring joie de vivre and luxury to the fore and reflect the wanderlust and longing for exoticism and extravagance. With lots of energy and passion, they provide exciting focal points in the ambience.

---

# walls by patel images

The complete wbpIV image archive is available under the following download link:

[downloads.patel-design.de/wbpIV\\_pressebildarchiv.zip](https://downloads.patel-design.de/wbpIV_pressebildarchiv.zip)

—

## portraits + logos



*wbpIV\_portrait.jpg*

Bildunterschrift:

Designer Mark & Kathrin Patel  
[www.kathrinpatel.de](http://www.kathrinpatel.de)

—

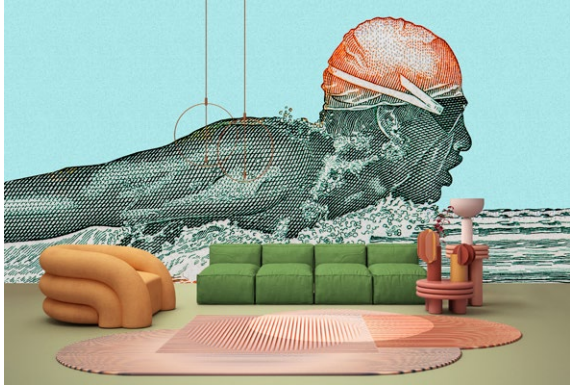


*wbpIV\_logo\_1.jpg*

walls  
by patel

*wbpIV\_logo\_2.jpg*

# playful futurism



*aquaman.jpg*



*altitude\_02.jpg*



*rhea\_1.jpg*



*azura.jpg*



*runa.jpg*



*botany\_01.jpg*

# playful futurism



*clio.jpg*



*new\_roman.jpg*



*nova\_01.jpg*



*solaris\_02.jpg*



*platinum\_01.jpg*



*fable.jpg*

# generative phantasies



*swirl.jpg*



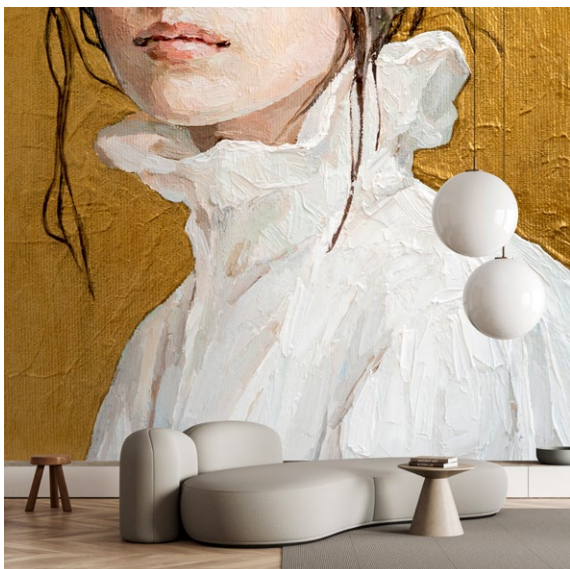
*delta.jpg*



*co-colores\_01.jpg*



*fluxus.jpg*



*golda.jpg*



*opulea.jpg*

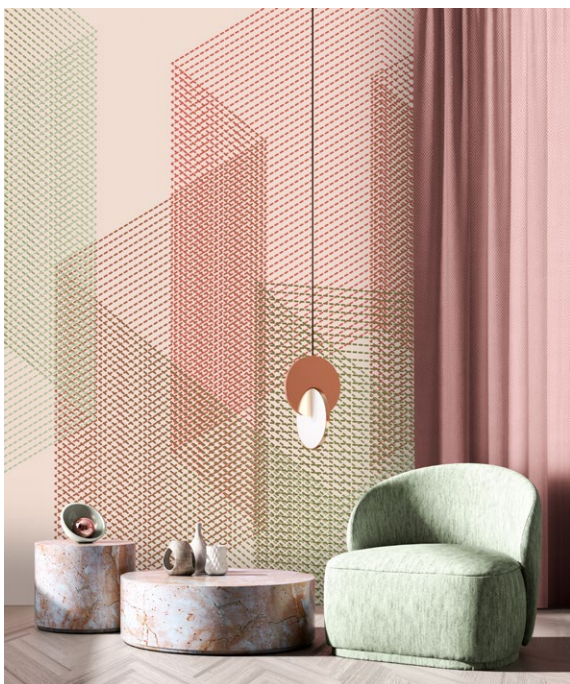
# generative phantasies



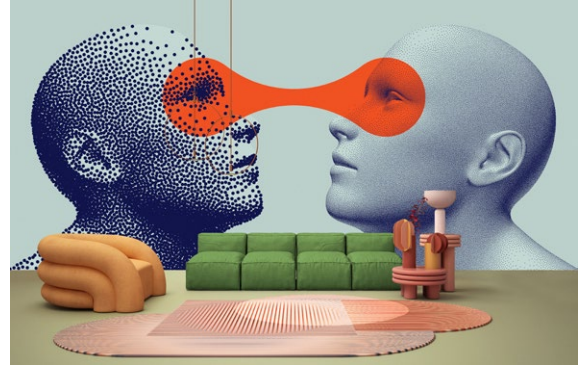
*focus.jpg*



*luke.jpg*



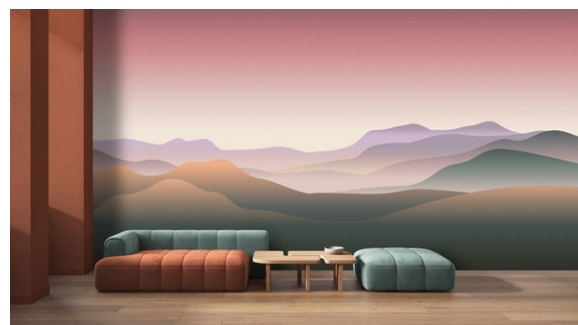
*mesh\_02.jpg*



*think\_tank.jpg*



*vivian.jpg*



*terra.jpg*

# down to earth



*mikala.jpg*



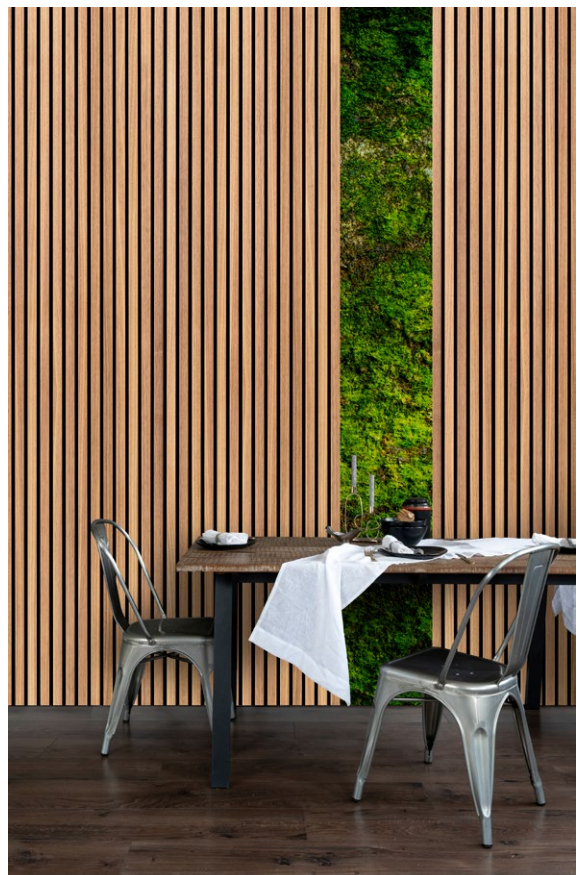
*yugana.jpg*



*horishi.jpg*



*alani.jpg*



*panel\_02.jpg*

# down to earth



*lily.jpg*



*taiyo.jpg*



*merula.jpg*



*pavo.jpg*



*nikko.jpg*

# down to earth



*mytho.jpg*



*fern.jpg*



*toranta.jpg*

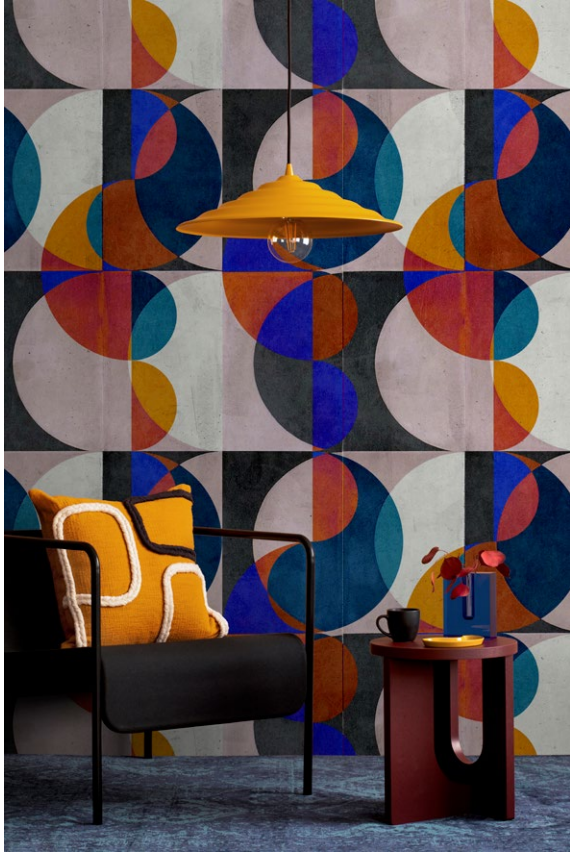


*paradise.jpg*

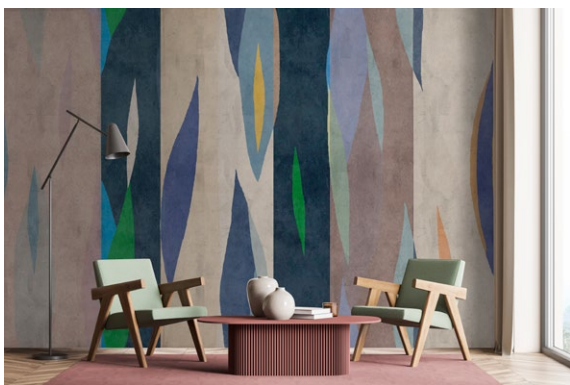


*kerala.jpg*

# handcrafted charisma



*mia.jpg*



*vito.jpg*



*aurora.jpg*



*nevio.jpg*

# handcrafted charisma



*tinterra\_02.jpg*



*tinterra\_03.jpg*



*elija\_02.jpg*



*carmente\_01.jpg*

# handcrafted charisma



julek\_02.jpg



zora.jpg



emilia.jpg



estrella\_02.jpg

# handcrafted charisma



*siena.jpg*



*jodhpur.jpg*



*madurai.jpg*



*fiore.jpg*

# old world opulence



rani.jpg



skye\_02.jpg



khan.jpg



orangerie\_02.jpg



orangerie\_01.jpg



amazona\_02.jpg

# old world opulence



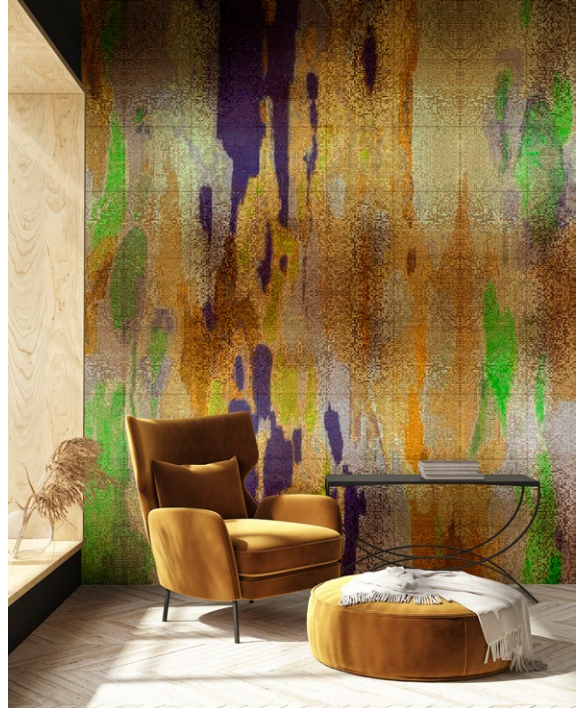
*kimo\_02.jpg*



*sati\_02.jpg*



*ophelia.jpg*



*marielle\_01.jpg*



*pierre.jpg*

# old world opulence



jolie.jpg



victoria.jpg



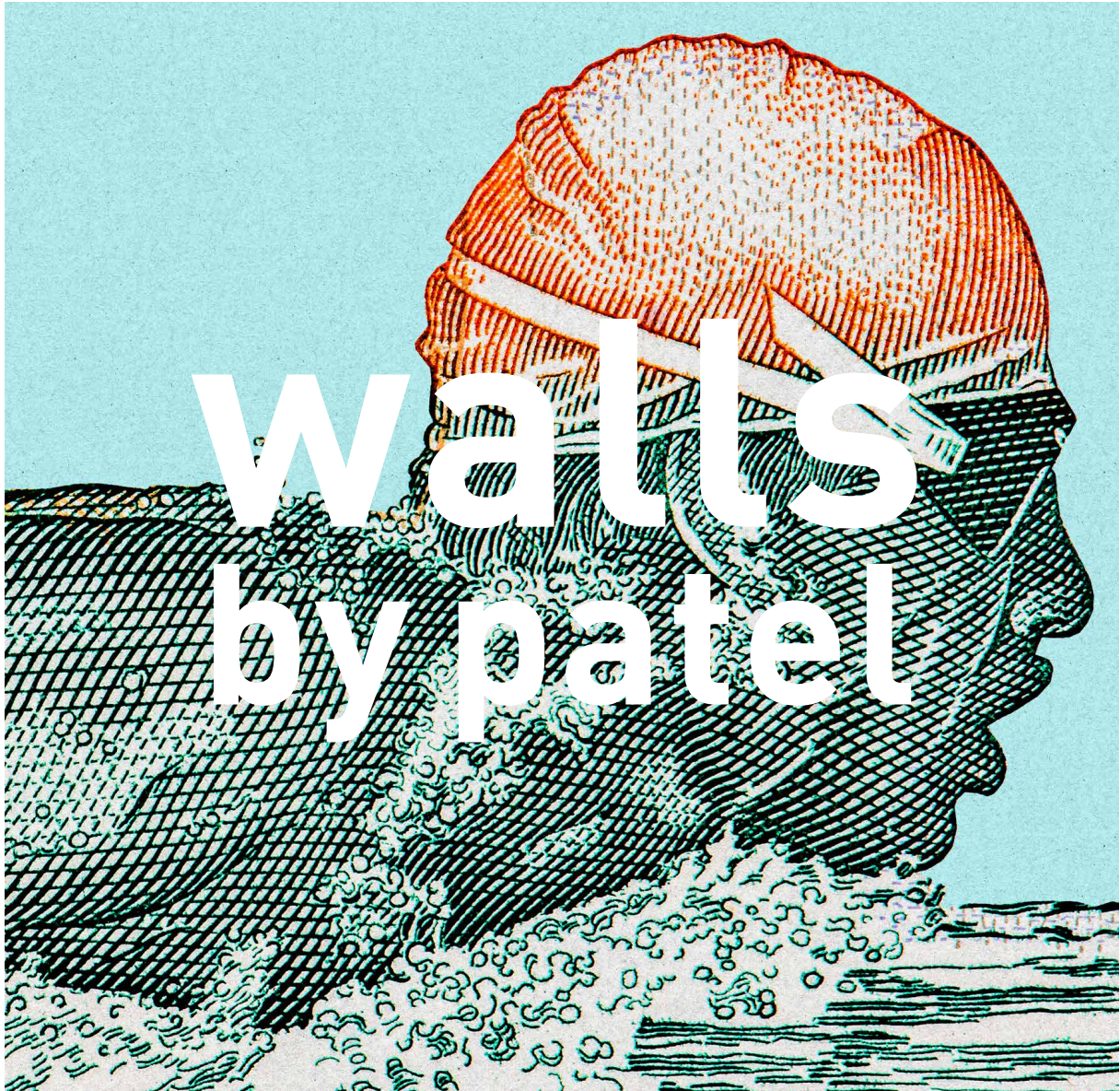
babette.jpg



madras\_02.jpg

# walls by patel print materials

# collection book



The collection book with the complete collection in 45 x 50 cm format. The printed book can be obtained from A.S. Création Tapeten AG. All the motifs shown in the book are available in high resolution on request.

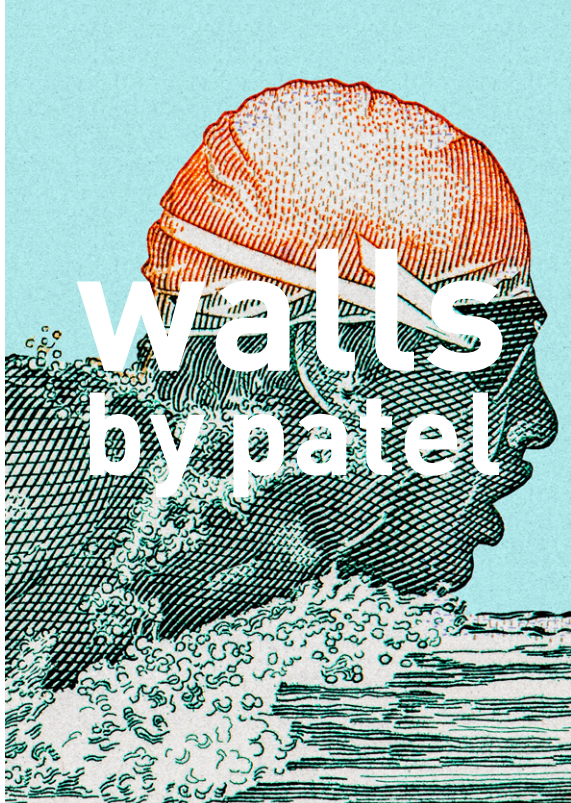
PDFs of the collection book can be downloaded from the following links:

[downloads.patel-design.de/wbplV\\_kollektionsbuch.pdf](https://downloads.patel-design.de/wbplV_kollektionsbuch.pdf)

High resolution (630 MB)

[downloads.patel-design.de/wbplV\\_kollektionsbuch\\_RZ\\_highres.pdf](https://downloads.patel-design.de/wbplV_kollektionsbuch_RZ_highres.pdf)

# teaser brochure



Teaser brochure with a brief overview of the collection in DIN A5 format. The printed brochure can be obtained from A.S. Création Tapeten AG.

A PDF of the teaser brochure is available at the following download link:

[downloads.patel-design.de/wbplV\\_teaserbroschuere.pdf](https://downloads.patel-design.de/wbplV_teaserbroschuere.pdf)

—

# walls by patel contact

**kathrin patel**

tel +49-177-7777 690  
mail@kathrinpatel.de  
www.kathrinpatel.de

**mark patel**

tel +49-173-91 41 280  
mp@patel-design.de  
www.patel-design.de

—

**design office**

am dammacker 13b  
28201 bremen  
germany

—

